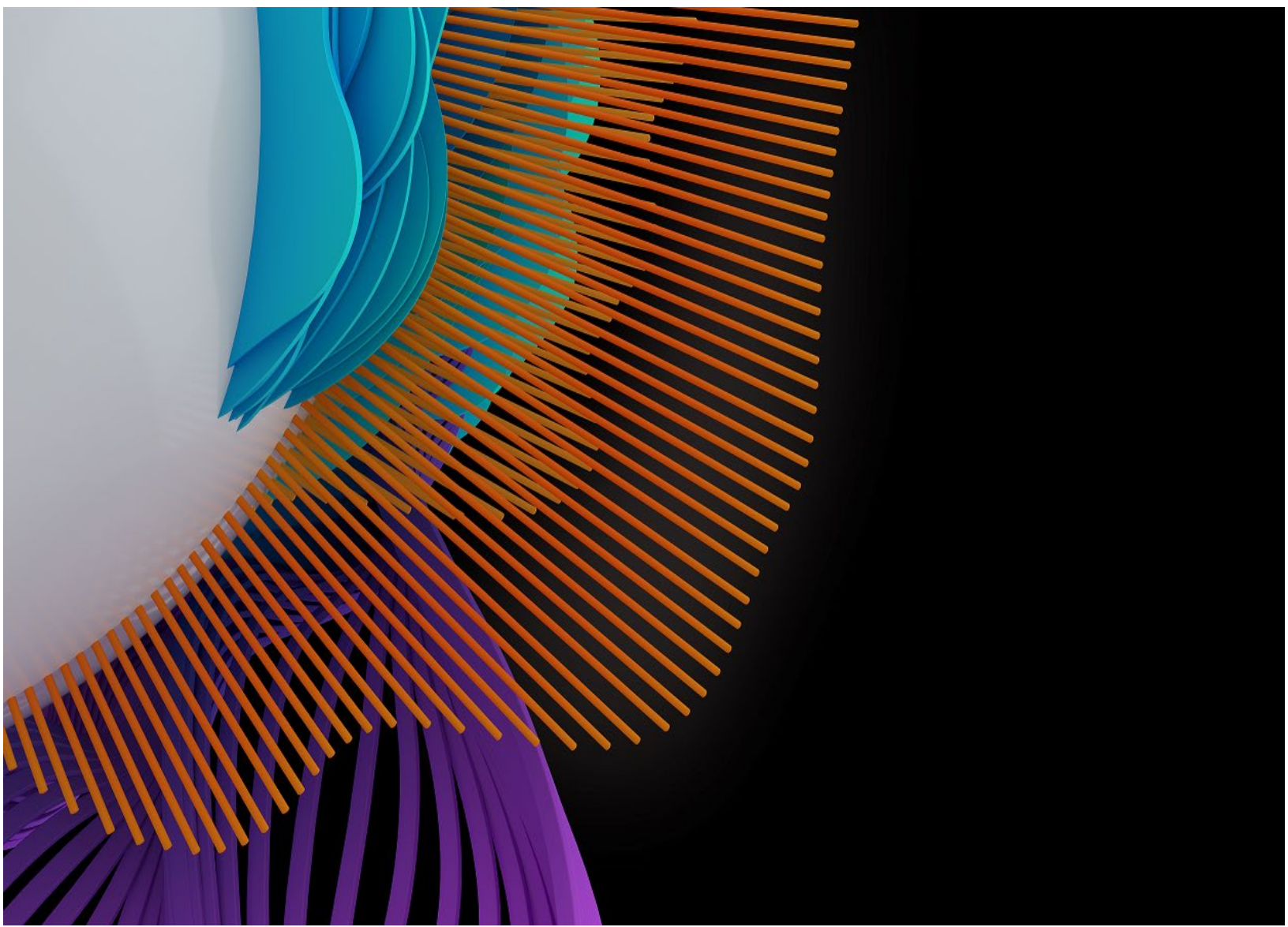


# Notification Services Reference Guide (v1)

*ScholarOne Manuscripts™*



## TABLE OF CONTENTS

VERSION HISTORY .....	1
OVERVIEW.....	1
Standards.....	2
Service Prerequisites .....	2
Support .....	2
Message Delivery.....	3
CREATION: .....	3
FAULT TOLERANCE: .....	3
EXPIRATION: .....	3
ON-HOLD: .....	3
CANCELLATION: .....	3
SCHOLARONE NOTIFICATION SERVICES.....	4
Notification Payload Details.....	5
Common Elements.....	6
COMMON PAYLOAD ELEMENTS .....	6
Decision Notifications .....	7
DECISION PAYLOAD ELEMENTS .....	7
DECISION PAYLOAD SAMPLE .....	8
Task Status Notifications.....	8
TASK STATUS PAYLOAD ELEMENTS .....	9
TASK STATUS PAYLOAD SAMPLE .....	9
Manuscript Submission Notifications .....	9
MANUSCRIPT SUBMISSION PAYLOAD ELEMENTS .....	10
MANUSCRIPT SUBMISSION PAYLOAD SAMPLE .....	10
Manuscript Transfer Notifications .....	11
MANUSCRIPT TRANSFER PAYLOAD ELEMENTS .....	11
MANUSCRIPT TRANSFER PAYLOAD SAMPLE .....	12
Monitoring and Support Tools.....	12
NOTIFICATION SERVICES REPORT .....	12
NOTIFICATION SERVICES ENDPOINTS.....	15
APPENDIX.....	16
ScholarOne Web Services Overview .....	16

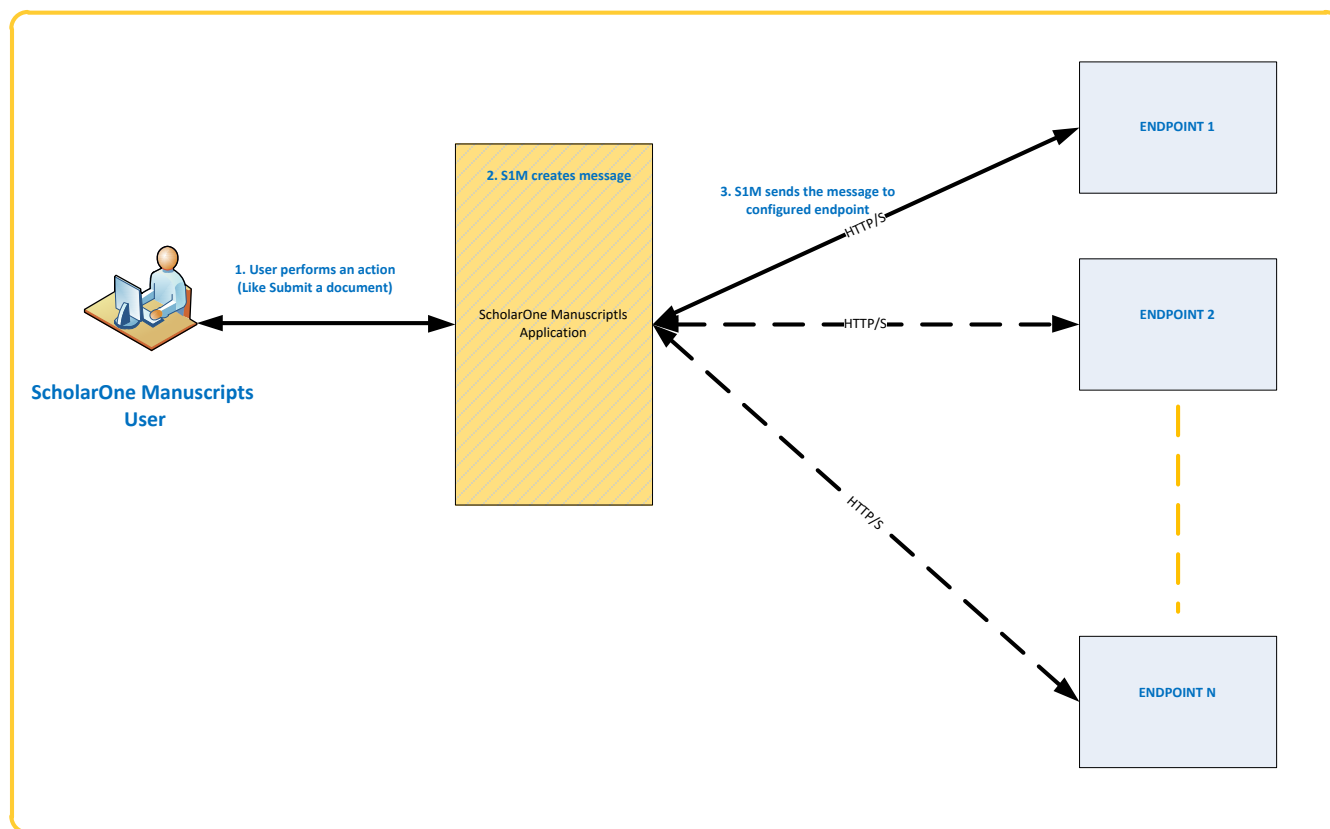
## VERSION HISTORY

Update Summary	Date	Name
Initial Version (v1) published	November 17, 2015	Shane Stafford

## OVERVIEW

*ScholarOne Notification Services* deliver real time messages to customer specified endpoints as subscribed events occur within the *ScholarOne Manuscripts* application. Customers can leverage notifications to integrate applications with *ScholarOne Manuscripts* to solution/automate use cases where business processes span multiple systems. See the [ScholarOne Web Services Overview](#) in the appendix for a more holistic view of use case solution possibilities.

### High Level View



As shown above, based on action performed by the user and a system subscribed to the action (For Notification Services), the *ScholarOne Manuscripts* application will create the message and send the message to the configured endpoint(s). An important note is *ScholarOne Notification Services* can create and send messages to one or more endpoints for a subscribed event. (Based on configuration).

## STANDARDS

*ScholarOne Notification Services* comply with the following standards:

- Protocol: HTTP/HTTPS
- Method: GET (HTTP)
- Formats: Queryparam (Key/Value pair)

## SERVICE PREREQUISITES

To use ScholarOne Notification Services:

- Receiver (Endpoint) is available to receive the notifications
  - Receiver should always send a response back as per standard HTTP Protocol
    - With proper HTTP code for SUCCESS/FAILURE
  - Receiver can be built using any framework
- Request ScholarOne enable and configure the Notification Services for the journal(s).
  - Provide the Endpoint details (Receiver created to receive the notification services)
- Make sure firewall is configured to accept the http request coming from ScholarOne
  - ScholarOne will provide the IP Address (If Required)

## SUPPORT

If you have questions about using our Web Services and Notification Services capabilities or about your access to it, please visit our Get Help Now page at <http://mchelp.manuscriptcentral.com/gethelpnow/> and select the Developer role. This page has links to our Technical FAQs and reference documents, and to options to create a case which will be directed to ScholarOne Support. Questions about network connections and/or the use of your Web browser should be directed to your Network Administrator.

## MESSAGE DELIVERY

The delivery system is equipped with fault tolerance and hold features to provide assurance attempted messages are successfully received at the destination endpoint.

**Creation:** Messages will be created and sent to a defined endpoint based on a subscribed user action in the *ScholarOne Manuscripts* application. In most cases messages will be delivered reliably, and only once to an Endpoint.

**Fault Tolerance:** Messages will be redelivered to an endpoint when any of the following conditions occur:

- Connection to endpoint timeout (Endpoint may be taking more time than usual to respond)
- ScholarOne is unable to connect to the endpoint
  - Due to network issue
  - Endpoint is down
- Additional delivery attempts are scheduled to occur <10MIN> after the previous failure.

**Expiration:** Message delivery attempts will expire after **7 days** from creation and will not be re-tried after this period. If due to any reason your receiving server is down or is scheduled to go down for an extended period of time then you may wish to place delivery of messages on-hold. See the On-Hold section below for more details.

**On-Hold:** The On-hold feature provides the ability to place the delivery of messages to a specific endpoint on-hold (i.e. don't send messages to this endpoint).

Messages will continue to be created as subscribed events occur in ScholarOne, but delivery will not be attempted when an endpoint is on-hold. All messages queued for delivery to an endpoint that is on-hold will be delivered when the on-hold period ends. The expiration period for all messages in the delivery queue will be extended to **7 days** from the on-hold end date (expiration period will no longer be derived from creation date). Please note messages will not be re-tried after **45 days** from creation, regardless of endpoint status.

The On-hold feature can be managed within the *ScholarOne Manuscripts* Application. See [Monitoring and Support Tools](#) section for more information.

**Cancellation:** Created messages pending successful delivery may be cancelled. Message cancellation may be performed by accessing the Notification Services Report within the *ScholarOne Manuscripts* application. See [Monitoring and Support Tools](#) section for more information.

## SCHOLARONE NOTIFICATION SERVICES

There are several types of notifications that can be subscribed to within the *ScholarOne Manuscripts* application.

**Decision** notifications deliver a standard message payload when a subscribed decision or recommendation event is triggered for a manuscript. Manuscript decision events available for subscription include all decisions and recommendations configured across all configured decision tasks.

**Task Status** notifications deliver a standard message payload when a workflow task enters a subscribed status for a manuscript. Manuscript task status events available for subscription include all task statuses available across all configured tasks.

**Manuscript Submission** notifications deliver a standard message payload when a subscribed system workflow event is triggered for a manuscript. Manuscript submission events available for subscription include:

- Manuscript is Unsubmitted
- Manuscript is Withdrawn
- First Look Manuscript Submission Confirmation
- Invitation Manuscript Submission Confirmation
- Original Manuscript Submission Confirmation
- Resubmission Manuscript Submission Confirmation
- Revised Manuscript Submission Confirmation
- Immediate Reject Decision from the Checklist
- Manuscript Export Failed
- Manuscript Export Succeeded
- Manuscript Export Failed (File Storage)
- Manuscript Export Succeeded (File Storage)

**Manuscript Transfer** notifications deliver a standard message payload when a subscribed transfer event is triggered for a manuscript. Manuscript transfer events available for subscription include:

- Transfer a Document
- Transfer document received

- Manuscript Transfer Author Approval
- Transferred Manuscript Submission Confirmation
- Immediate Reject with Transfer Decision from the Checklist

## NOTIFICATION PAYLOAD DETAILS

Each message includes:

- Service Endpoint Address for the external system
- Payload (as query parameters)
  - Further defined in this document as common elements included in all notifications and notification type specific elements

## COMMON ELEMENTS

---

The standard notification payload varies by notification type. There are, however, a common set of payload elements that are included across all notification types.

### Common Payload Elements

Element	Type	Description	Example
messageUUID	String	Global unique identifier of the message.	9d7e3773-32ea-481e-a647-944bbe9c24b7
notificationServiceVersion	String	The version of Notifications Services payload the endpoint is configured to receive.	V1
siteName	String	Site short name. The short name is the abbreviated or truncated name of the journal, society, publisher, or family.	clientdemoplus
journalName	String	The long name associated with the journal as defined during issue creation.	Client Demo Plus
eventDate	dateTime	The date and time in UTC the message was created.	2014-11-05T10:34:02Z
subscriptionId	Integer	System generated ID for each configured Subscription.	8011
subscriptionName	String	The configured name of the subscription that triggered the message.	WithdrawnManuscript
subscriptionType	String	The system label for the type of subscription. Available subscription types are Decision, Task Status Change, and System Event.	DECISION



## DECISION NOTIFICATIONS

---

Decision Notifications deliver a message payload consisting of the [common elements](#), basic metadata about the manuscript, and identifying information about the decision event.

### Decision Payload Elements

Element	Type	Description	Example
documentId	Integer	Unique identifier of the document. Unique identifier for each Manuscript Revision in the ScholarOne Manuscripts system. Internally to ScholarOne, this is a numeric value.	16346001
submissionId	String	Also known as the Manuscript ID or Document Number. A unique identifier given to each submitted manuscript. SubmissionID s are case sensitive; they are not necessarily unique.	WK-12-2013-0273-OM
documentStatusName	String	User-friendly name of a document's status in the journal's submission workflow. Possible document status name values include Draft, Revised, Submitted, Resubmitted, Appeal, Decisioned, Withdrawn, Accept, Invited, Transferred_Out, Transferred_In, First_Look, Transferred_In_Pending, Transferred_In_Issue.	Accept
submissionTitle	String	The title of a manuscript submitted to a publication.	Title
documentTaskId	Integer	Global unique identifier of the task.	132591939
taskStatus	String	The current status of the given task. For a given task, can be one of pending, processing, overdue, completed, abandoned, overridden, anytime, closing, initiated, on hold, or rescinded.	COMPLETED
recDecisionType	String	The system label for indicating the configured event is a decision or recommendation. Available types are type_decision and type_recommendation.	TYPE_DECISION
decisionType	String	The system label for the type of decision made. Available decision types are Accept, Accept_for_First_Look, Reject, Reject_With_Appeal, Reject_With_Resubmit, Reject_With_Transfer, Revise_Minor, Revise_Major, Additional_Review, and Publish.	ACCEPT

Element	Type	Description	Example
decisionName	String	The configured name of the decision rendered on the task.	Accept

## Decision Payload Sample

```
documentTaskId=128342462&submissionId=WRK1-1502&decisionType=ACCEPT&submissionTitle=Warm Red Rat Number 3 – QARED&siteName=qared&eventDate=2015-02-10T14:46:34Z&subscriptionId=143&messageUUID=75e084a8-a2af-4c03-9b14-791be0fe661c&taskStatus=COMPLETED&documented=16597076&decisionName=Immediate Accept&recDecisionType=TYPE_DECISION&documentStatusName=Accepted&subscriptionType=DECISION&subscriptionName=Editor Accept Immediate&documentStatus=Accepted&journalName=QA – Red Site&siteName=qared&subscriptionName=Editor Accept Immediate&messageUUID=75e084a8-a2af-4c03-9b14-791be0fe661c&notificationServiceVersion=V1&journalName=QA – Red Site&subscriptionId=143&subscriptionType=DECISION&eventDate=2015-02-10T14:46:34Z
```

## TASK STATUS NOTIFICATIONS

Task Status Notifications deliver a message payload consisting of the [common elements](#), basic metadata about the manuscript, and identifying information about the task status event.

## Task Status Payload Elements

Element	Type	Description	Example
documentId	Integer	Unique identifier of the document. Unique identifier for each Manuscript Revision in the ScholarOne Manuscripts system. Internally to ScholarOne, this is a numeric value.	16346001
submissionId	String	Also known as the Manuscript ID or Document Number. A unique identifier given to each submitted manuscript. SubmissionID s are case sensitive; they are not necessarily unique.	WK-12-2013-0273-OM
documentStatusName	String	User-friendly name of a document's status in the journal's submission workflow. Possible document status name values include Draft, Revised, Submitted, Resubmitted, Appeal, Decisioned, Withdrawn, Accept, Invited, Transferred_Out, Transferred_In, First_Look, Transferred_In_Pending, Transferred_In_Issue.	Accept
submissionTitle	String	The title of a manuscript submitted to a publication.	Title
documentTaskId	String	Global unique identifier of the task.	132591939
taskStatus	String	The current status of the given task. For a given task, can be one of pending, processing, overdue, completed, abandoned, overridden, anytime, closing, initiated, on hold, or rescinded.	COMPLETED

## Task Status Payload Sample

```
submissionTitle=Jerry Test&submissionId=WRK1-0608&documented=470754&documentTaskId=2420758&taskStatus=OVERDUE&documentStatusName=Withdrawn&notificationServiceVersion=V1&siteName=qared&journalName=QA – Red Site&subscriptionId=26&subscriptionName=name2&subscriptionType=TASK_STATUS_CHANGE&eventDate=2015-01-26T13:29:00Z&messageUUID=fc34ad93-995b-4442-a635-5e715027a242
```

## MANUSCRIPT SUBMISSION NOTIFICATIONS

Manuscript Submission Notifications deliver a message payload consisting of the [common elements](#), basic metadata about the manuscript, and identifying information about the system workflow event.

## Manuscript Submission Payload Elements

Element	Type	Description	Example
documentId	Integer	Unique identifier of the document. Unique identifier for each Manuscript Revision in the ScholarOne Manuscripts system. Internally to ScholarOne, this is a numeric value.	16346001
submissionId	String	Also known as the Manuscript ID or Document Number. A unique identifier given to each submitted manuscript. SubmissionID s are case sensitive; they are not necessarily unique.	WK-12-2013-0273-OM
documentStatusName	String	User-friendly name of a document's status in the journal's submission workflow. Possible document status name values include Draft, Revised, Submitted, Resubmitted, Appeal, Decisioned, Withdrawn, Accept, Invited, Transferred_Out, Transferred_In, First_Look, Transferred_In_Pending, Transferred_In_Issue.	Accept
submissionTitle	String	The title of a manuscript submitted to a publication.	Title
systemEventName	String	The system label for the type of system event. Available submission system events are Admin_Unsubmit_Manuscript, Admin_Withdraw_Manuscript, Author_Submit_Manuscript_Firl, Author_Submit_Manuscript_Orig, Author_Submit_Manuscript_Invi, Author_Submit_Manuscript_Revi, Author_Submit_Manuscript_Resu, Save_Checklist_Immediate_Deny_Decision, Export_Succeeded, Export_failed, File_Storage_Export_Succeeded, File_Storage_Export_Failed	ADMIN_WITHDRAW_MANUSCRIPT

## Manuscript Submission Payload Sample

```

submissionTitle=Jerry Test&submissionId=WRK1-
0608&11documented=470754&documentStatusName=Withdrawn&systemEventName=ADMIN_WITHD
RAW_MANUSCRIPT&notificationServiceVersion=V1&siteName=qared&journalName=QA – Red
Site&subscriptionId=71&subscriptionName=MS is
Withdrawn&subscriptionType=SYSTEM_EVENT&eventDate=2015-01-
26T13:29:00Z&messageUUID=94295958-7113-4fcd-a4b2-0d12f7572b61
  
```

## MANUSCRIPT TRANSFER NOTIFICATIONS

Manuscript Submission Notifications deliver a message payload consisting of the [common elements](#), basic metadata about the manuscript, and identifying information about the transfer event.

### Manuscript Transfer Payload Elements

Element	Type	Description	Example
documentId	Integer	Unique identifier of the document. Unique identifier for each Manuscript Revision in the ScholarOne Manuscripts system. Internally to ScholarOne, this is a numeric value.	16346001
submissionId	String	Also known as the Manuscript ID or Document Number. A unique identifier given to each submitted manuscript. SubmissionID s are case sensitive; they are not necessarily unique.	WK-12-2013-0273-OM
documentStatusName	String	User-friendly name of a document’s status in the journal’s submission workflow. Possible document status name values include Draft, Revised, Submitted, Resubmitted, Appeal, Decisioned, Withdrawn, Accept, Invited, Transferred_Out, Transferred_In, First_Look, Transferred_In_Pending, Transferred_In_Issue.	Accepted
submissionTitle	String	The title of a manuscript submitted to a publication.	Title
systemEventName	String	The system label for the type of system event. Available transfer system events are Transferred_Doc_Received, Fire_Doc_Transfer_Email, Author_Submit_Manuscript_transferred,	TRANSFERRED_DOC_RECEIVE D

Element	Type	Description	Example
		Manuscript_Transfer_Author_Approval, and Save_Checklist_Reject_With_Transfer.	
contraSiteName	String	The site name that did not initiate the event, but is the site the document was transferred to or from. The site name that initiated the event is provided in the common "siteName" element.	Pmdemoplus

## Manuscript Transfer Payload Sample

```

submissionTitle=LaTex S2&submissionId=WRK1-
1482&documentId=15925165&documentStatusName=Transferred
Out&systemEventName=FIRE_DOC_TRANSFER_EMAIL&contraSiteName=red&notificationServiceVersi
on=V1&siteName=qared&journalName=QA - Red Site&subscriptionId=80&subscriptionName=Transfer
a Doc&subscriptionType=SYSTEM_EVENT&eventDate=2015-01-
28T14:50:47Z&messageUUID=3d37becd-cc18-471f-bc8d-fe1378ee5c2c
  
```

## MONITORING AND SUPPORT TOOLS

There are several tools available in the *ScholarOne Manuscripts* application for troubleshooting and managing message traffic. Based on your system needs, endpoints can be defined and maintained at the publisher (portal) or journal (site) level. When endpoints are defined at the publisher (portal) level, subscriptions can be configured and maintained for all child journals (sites) from the portal. The same applies for searching and reporting message delivery activity.

Notification Services Tools
<b>Notification Services Monitoring and Reports</b>
<a href="#">Notification Services Report</a>
<b>Notification Services Endpoint Details</b>
<a href="#">Notification Services Endpoints</a>

## Notification Services Report

The Notification Services Report allows customers to search across all created messages, returning key information about the origin of each message, the delivery status, payload, delivery attempts, and provides the ability to cancel messages that are pending successful delivery.

Search for created messages using advanced filter criteria (see below):

**Notification Services Report**

Notification Services Message Delivery Monitoring - Filters

**Consumer Journal:** qa-auto-accs-qared-sel (qa-auto-qared-sel) - Active

**Consumer:**

**Endpoint:**

**Subscription:**

**Message Status:**

**Subscription Area:**

**Subscription Journal:** qa-auto-accs-qared-sel (qa-auto-qared-sel) - Active

**Message ID:**

**Message UUID:**

**Document ID:**

**Submission ID:**

**Person ID:**


**Create Date:**

All
  YTD
  Last 24 Hrs

Specify:

From:

To:

 Search

Created messages matching the search criteria are displayed in an interactive (sencha) grid. Select the "X" icon under the actions column to cancel a message that has not been successfully delivered, previously cancelled, or expired (see below):

Notification Message Search Results							
Actions	Message UUID	Create Date	Status	Subscription Area	Next Process Date	Expiration Date	Consumer Name
	f28692df-8af1-4bc2-ba66-d5877d54e787	16-Oct-2015 4:10:00 AM EDT	Succeeded	Task Status Change	16-Oct-2015 4:12:03 AM EDT	23-Oct-2015 4:10:00 AM EDT	testing_consumer
	0f65ebad-f783-4712-a7f6-7361ca38e4c5	16-Oct-2015 4:02:51 AM EDT	Succeeded	Task Status Change	16-Oct-2015 4:04:55 AM EDT	23-Oct-2015 4:02:51 AM EDT	testing_consumer
	b7a88c38-d7d6-4cad-920a-f4149e6e19a2	16-Oct-2015 3:48:54 AM EDT	Succeeded	Task Status Change	16-Oct-2015 3:50:55 AM EDT	23-Oct-2015 3:48:54 AM EDT	testing_consumer
	6d7a59cd-cc94-4a6e-80c8-684e7ff1fe73	16-Oct-2015 3:45:30 AM EDT	Succeeded	Task Status Change	16-Oct-2015 3:47:32 AM EDT	23-Oct-2015 3:45:30 AM EDT	testing_consumer
	2a1fbeb6-f350-48c2-a316-76356b336c42	16-Oct-2015 3:34:45 AM EDT	Succeeded	Task Status Change	16-Oct-2015 3:36:46 AM EDT	23-Oct-2015 3:34:45 AM EDT	testing_consumer
	e0d8910-44a9-453b-a6f0-fd64fa8ad2ae	16-Oct-2015 3:32:37 AM EDT	Succeeded	Task Status Change	16-Oct-2015 3:34:39 AM EDT	23-Oct-2015 3:32:37 AM EDT	testing_consumer
	393bb3dc-b99a-474b-b046-229777251082	16-Oct-2015 3:20:01 AM EDT	Succeeded	Task Status Change	16-Oct-2015 3:22:09 AM EDT	23-Oct-2015 3:20:01 AM EDT	testing_consumer
	716bf1c8-fd42-47ba-a7d5-ae4b42e494ea	16-Oct-2015 3:17:05 AM EDT	Succeeded	Task Status Change	16-Oct-2015 3:19:08 AM EDT	23-Oct-2015 3:17:05 AM EDT	testing_consumer
	3c0b1c0b-c14d-495f-b50b-40a1c595e7f7	16-Oct-2015 3:04:08 AM EDT	Succeeded	Task Status Change	16-Oct-2015 3:06:15 AM EDT	23-Oct-2015 3:04:08 AM EDT	testing_consumer
	a0d65335-e469-4d15-bff5-c53eeead25a3	16-Oct-2015 3:00:55 AM EDT	Succeeded	Task Status Change	16-Oct-2015 3:05:08 AM EDT	23-Oct-2015 3:00:55 AM EDT	testing_consumer
	8e714289-c500-4032-b608-8a286eab4b60	16-Oct-2015 2:28:08 AM EDT	Succeeded	Task Status Change	16-Oct-2015 2:30:21 AM EDT	23-Oct-2015 2:28:08 AM EDT	testing_consumer
	a0eead42-8475-43f2-9605-4aabedf79d3d	16-Oct-2015 2:25:32 AM EDT	Succeeded	Task Status Change	16-Oct-2015 2:27:36 AM EDT	23-Oct-2015 2:25:32 AM EDT	testing_consumer
	ca9fd073-b706-441e-8b9e-e74b26a8c6ad	16-Oct-2015 2:15:53 AM EDT	Succeeded	Task Status Change	16-Oct-2015 2:20:13 AM EDT	23-Oct-2015 2:15:53 AM EDT	testing_consumer
	0f5c35fc-166b-4329-b703-d540fa35950	16-Oct-2015 2:12:42 AM EDT	Succeeded	Task Status Change	16-Oct-2015 2:14:51 AM EDT	23-Oct-2015 2:12:42 AM EDT	testing_consumer
	3314e06f-7b1e-485d-8d2b-18ff57a35fe6	07-Oct-2015 3:13:06 AM EDT	Succeeded	Task Status Change		07-Oct-2015 3:16:06 AM EDT	testing_consumer
	48d9e711-c4ff-4401-b7de-e953a6dc3a4d	07-Oct-2015 3:11:09 AM EDT	Succeeded	Task Status Change		07-Oct-2015 3:14:09 AM EDT	testing_consumer
	f68d31d6-c50a-4c44-8885-b26adfcbb886	07-Oct-2015 3:05:50 AM EDT	Succeeded	Task Status Change		07-Oct-2015 3:08:50 AM EDT	testing_consumer
	4a369b47-4aca-4771-ba2b-1b3b5a727551	07-Oct-2015 3:03:47 AM EDT	Succeeded	Task Status Change		07-Oct-2015 3:06:47 AM EDT	testing_consumer
	ee844b9e-044f-4c5c-8dcd-a7f48baf7082	07-Oct-2015 2:57:02 AM EDT	Succeeded	Task Status Change		07-Oct-2015 3:00:02 AM EDT	testing_consumer
	59eb1a11-860f-4b2d-864d-eddfdfb4dd6	07-Oct-2015 2:55:38 AM EDT	Succeeded	Task Status Change		07-Oct-2015 2:58:38 AM EDT	testing_consumer
	d4aa6d3a-805e-4bd5-ad20-610a638b7ef8	07-Oct-2015 2:48:54 AM EDT	Succeeded	Task Status Change		07-Oct-2015 2:51:54 AM EDT	testing_consumer
	0b2a18bd-5d35-4910-816a-17b61a56503b	07-Oct-2015 2:47:05 AM EDT	Succeeded	Task Status Change		07-Oct-2015 2:50:05 AM EDT	testing_consumer
	18e8250e-edbb-42ab-a0a6-03f159955a68	07-Oct-2015 2:39:48 AM EDT	Succeeded	Task Status Change		07-Oct-2015 2:42:48 AM EDT	testing_consumer
	fed476fb-a732-41d6-81c2-f828a219f601	07-Oct-2015 2:37:49 AM EDT	Succeeded	Task Status Change		07-Oct-2015 2:40:49 AM EDT	testing_consumer
	2c20ad9c-77c2-43e9-88e9-160278120ffc	07-Oct-2015 2:31:16 AM EDT	Succeeded	Task Status Change		07-Oct-2015 2:34:16 AM EDT	testing_consumer

Additional details are available for each message when selecting the search magnifying glass icon (see below):

Message Delivery Details	
<b>Message ID:</b>	380
<b>Message UUID:</b>	f28692df-8af1-4bc2-ba66-d5877d54e787
<b>Create Date:</b>	16-Oct-2015 4:10:00 AM EDT
<b>Notification State:</b>	Succeeded
<b>Endpoint Name:</b>	testing_endpoint
<b>Subscription Name:</b>	
<b>Next Attempt:</b>	16-Oct-2015 4:12:03 AM EDT
<b>Expires:</b>	23-Oct-2015 4:10:00 AM EDT
<b>On Hold Start Date:</b>	
<b>On Hold End Date:</b>	
<b>Notification Payload</b>	submissionId=WRK1-0333&documentId=1863633&submissionTitle=Manuscript title&documentTaskId=20764708&taskStatus=COMPLETED&documentStatusName=Submitted&notificationServiceVersion=V1&siteName=qa-auto-qared-sel&subscriptionId=267&subscriptionName=&subscriptionType=TASK_STATUS_CHANGE&eventDate=2015-10-16T08:10:00Z&messageUUID=f28692df-8af1-4bc2-ba66-d5877d54e787&journalName=qa-auto-acs-qared-sel
<b>Notification History</b>	
Attempt	Status Response Code Response Value Error Value
2015-10-16 04:10:03.114	Succeeded 200 SUCCESS



## Notification Services Endpoints

The Notification Services Endpoints lists all configured endpoints for the site (journal or portal) and provides the ability to place endpoints on-hold as needed.

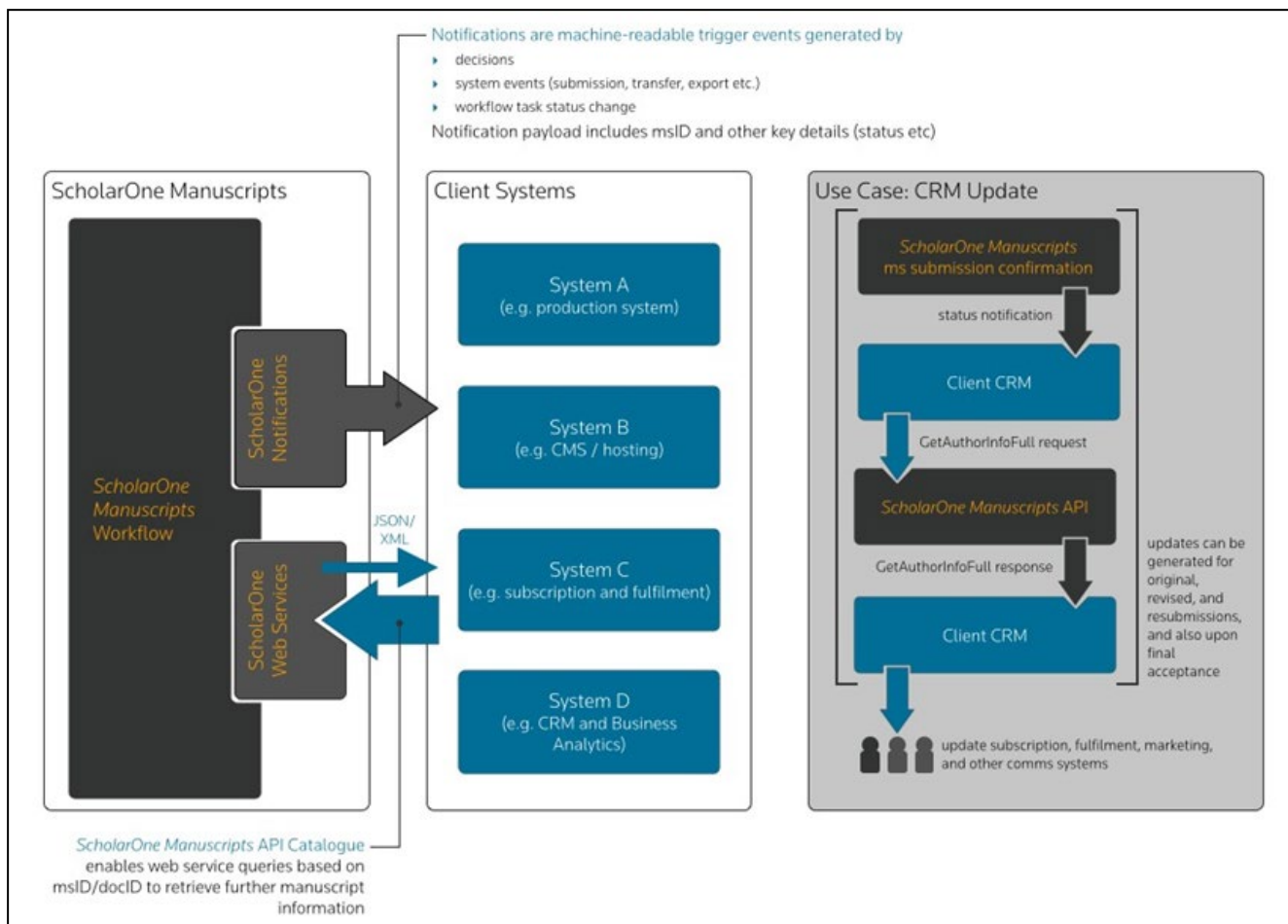
Selecting the On Hold checkbox for an endpoint will hold all delivery attempts of currently created messages and new messages created while the endpoint is on hold. De-selecting the On Hold checkbox for an endpoint will deliver all messages queued for the endpoint during the on hold period.

Notification Services Endpoint Details							
Name	URL	Authentication	Protocol/Format	Environment	Payload Version	Active	On Hold
testing_endpoint	https://qa2-test3-api.manuscriptcentral.com/api/s1m/v1/utility/notification?username=sample_user	HTTP Basic	HTTP GET	Qa	Version 1	<input checked="" type="checkbox"/>	<input type="checkbox"/>
							<input checked="" type="checkbox"/> Save

## APPENDIX

### SCHOLARONE WEB SERVICES OVERVIEW

Notification Services, alone or in combination with our [Web Services APIs](#), may be implemented to help resolve use cases where systems need to be tightly coupled as manuscripts move through the peer review process.



**About Web of Science Group**

*Web of Science Group*, a Clarivate Analytics company, organizes the world's research information to enable academia, corporations, publishers and governments to accelerate the pace of research. It is powered by *Web of Science* – the world's largest publisher-neutral citation index and research intelligence platform. Its many well-known brands also include *Converis*, *EndNote*, *Kopernio*, *Publons*, *ScholarOne* and the *Institute for Scientific Information (ISI)*. The 'university' of Web of Science Group, ISI maintains the knowledge corpus upon which the index and related information and analytical content and services are built; it disseminates that knowledge externally through events, conferences and publications and it carries out research to sustain, extend and improve the knowledge base. For more information, please visit [webofsciencegroup.com](http://webofsciencegroup.com).

© 2019 Clarivate Analytics. All rights reserved. Reproduction or redistribution of Clarivate Analytics content, including by framing or similar means, is prohibited without the prior written consent of Clarivate Analytics. Web of Science Group and its logo, as well as all other trademarks used herein are trademarks of their respective owners and used under license.