



Pharmacy Benefit Evaluator (PBE) and Managed Market Surveyor (MMS) lives data

Navigate the U.S. payer landscape with the latest updates from our PBE and MMS lives data. Accurate data is crucial for informed decision-making.

Importance of accurate lives data

The dynamic and rapidly changing U.S. payer landscape makes it crucial for pharma, biotech, and med tech companies to have the most up-to-date and accurate enrollment and pharmacy benefits data.

Our highly trusted and rigorously validated enrolled lives and pharmacy benefit management (PBM) data deliver a comprehensive dataset curated by our expert analyst team through a twice-yearly survey of payers and government agencies.

New PBM GPO lives data estimates

The Clarivate™ December release of July 2024 PBE data will include adding PBM Group purchasing organisation (GPO) lives estimates. This new data will show the size and influence of Group purchasing organizations (GPOs) negotiating prescription drug rebates, including the number of lives impacted at the GPO, PBM and payer (parent and subsidiary) levels for any geographic area in the U.S.

Millions of people continue to lose Medicaid coverage and move into commercial insurance, especially health insurance exchange plans, or become uninsured.

MMS lives data shows volatility with large enrollment shifts

Major enrollment shifts are changing managed care plans' market share and the payer mix across different U.S. geographies, disrupting health insurance coverage. Millions of people continue to lose Medicaid

coverage and move into commercial insurance, especially health insurance exchange plans, or become uninsured. However, there are some states where Medicaid enrollment is growing.



Highlights from the upcoming July 2024 MMS data release will show the following major enrollment shifts disrupting the health insurance sector:



Medicaid enrollment declined by at least

4M

over the prior six months



Public health insurance exchange enrollment growth of at least

0.5M

over the prior six months

12M

over the prior year

Reason: states redetermining eligibility following the end of the COVID public health emergency.

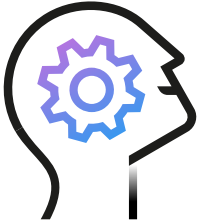
4.5M

over the prior year

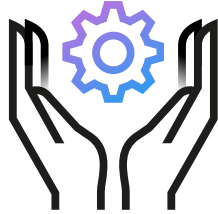
Reason: people losing Medicaid eligibility.

Continued Medicare growth driven by aging baby boomers.

With Clarivate enrolled lives data?



Accelerate strategic decisions with key trends and insights



Leverage expert analysis with insights and support from the analyst team



Benefit from complementary training sessions from subject matter experts

Make informed decisions and design successful market access strategies

- **Payer Contracting Strategy:**

Use accurate data on payer market share to optimize market access.

- **Competitive Edge:**

Analyze enrollment shifts and trends to identify opportunities and maintain market position.

- **Benefit Design Navigation:**

Understand benefit design influencers for key accounts and markets to navigate strategies effectively.

Data Release Schedule

Biannual Releases:

January data point released in June, July data point released in December.

Call to Action

- Equip yourself with essential enrollment data and insights.
- Leverage MMS enrolled lives data and trends reports to drive your market access strategy.
- Consider purchasing Pharmacy Benefit Evaluator (PBE) for additional insights on pharmacy benefit manager to health plan affiliations and formulary decision-making control.

To learn more and make a purchase, [click here](#). Stay tuned for future updates.

January data

point released

in June, July data

point released

in December.

About Clarivate

Clarivate™ is a leading global provider of transformative intelligence. We offer enriched data, insights & analytics, workflow solutions and expert services in the areas of Academia & Government, Intellectual Property and Life Sciences & Healthcare. For more information, please visit clarivate.com.

Contact our experts today:

clarivate.com