

Data and expertise  
you can trust to improve  
patient outcomes

Clarivate™ provides robust real-world data assets, advanced intelligence platforms and human expertise to help you accurately quantify target patient populations, prioritize commercial targets and remove barriers to treatment access.

## The richest and widest platform of interoperable global data

### United States

41B+ Mx and Rx claims

220M+ Mx patients in 2022

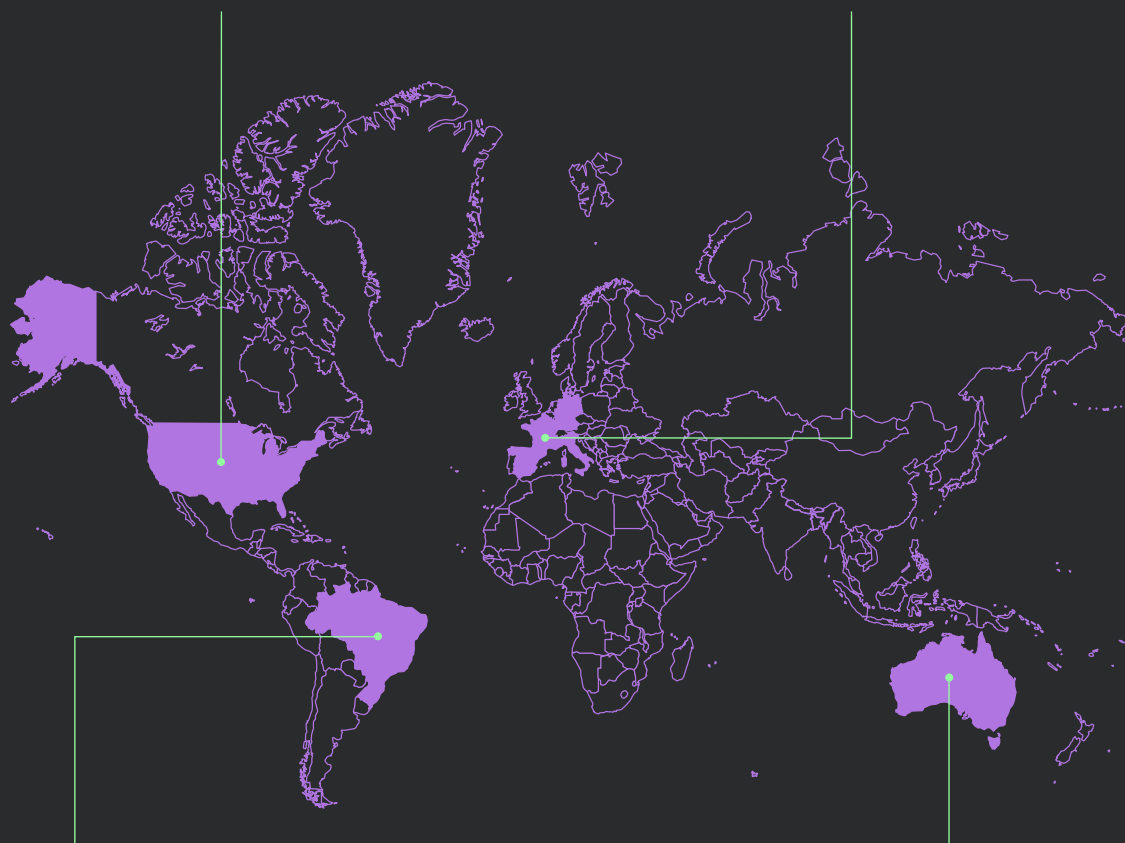
120M+ patients with linked claims and EHR

### Europe

20% in-patient care

70% out-patient care

25% community pharmacy



### Brazil

100% public health data

80% private health data

200M+ unique public patients

### Australia

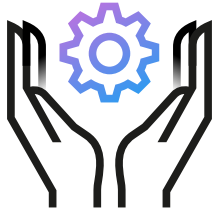
10+ years of longitudinal data

3M+ deidentified patients

100% coverage of all reimbursed drugs



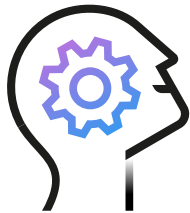
# Why leading life sciences companies partner with Clarivate?



## Data

### Connected, clean and confidential

- Connected breadth of longitudinal Mx and Rx claims with 75% overlap
  - Curated, standardized and deidentified data with improved patient master for a 360 degree view
- 



## Expertise

### Contextualized and collaborative

- Adding context and clarity to our data for a complete understanding of the patient
  - Data scientists and TA experts with decades of experience capturing patient cohorts
- 

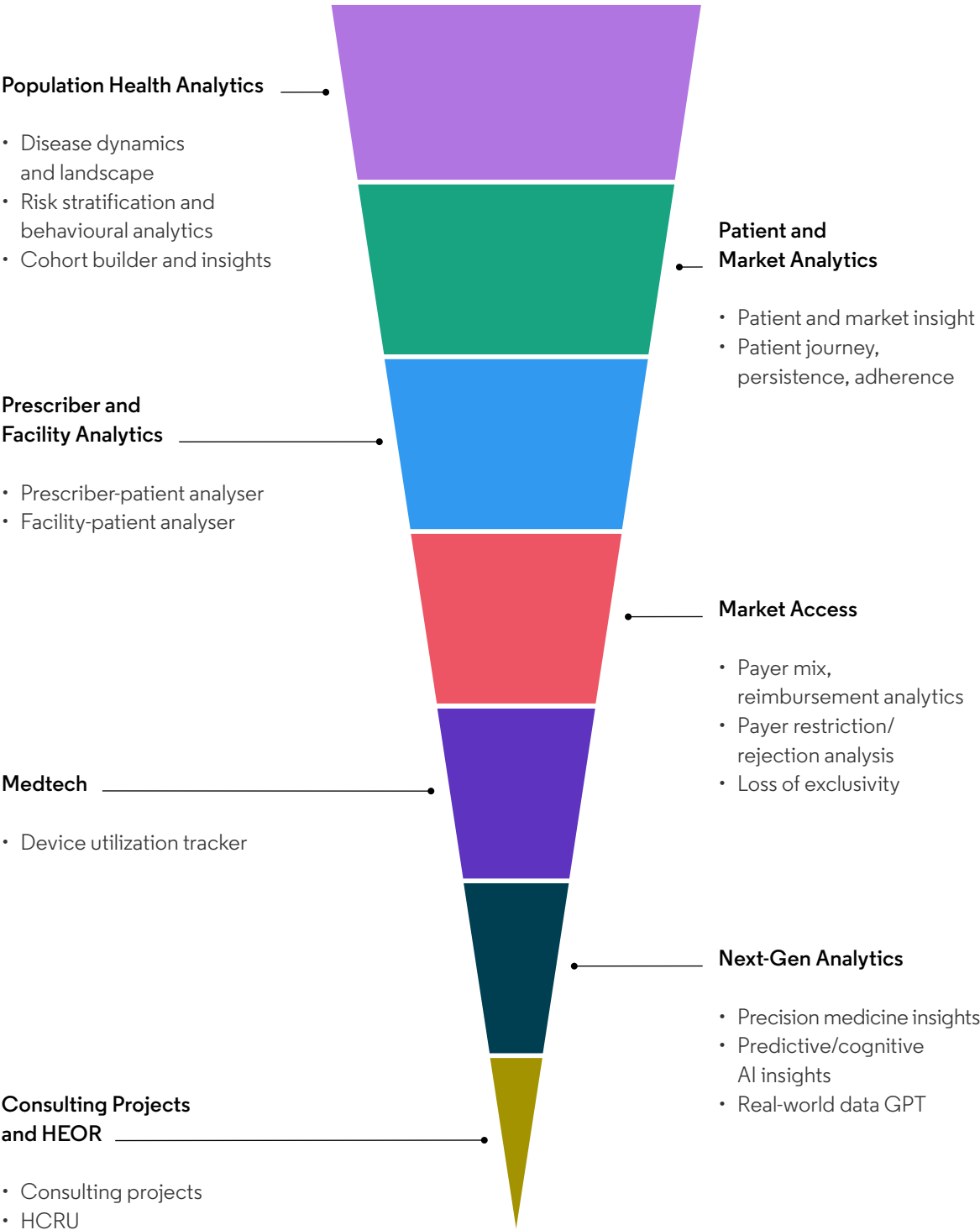


## Technology

### Correct and comprehensive

- Using AI-powered predictive analytics to capture insights you need
- Support from providing global data and standard dashboards to building advanced ML models

Our strategy for meeting the data requirements specific to your disease of interest is based on understanding the distinctiveness and intricacies of each therapy area.



## About Clarivate

Clarivate™ is a leading global provider of transformative intelligence. We offer enriched data, insights & analytics, workflow solutions and expert services in the areas of Academia & Government, Intellectual Property and Life Sciences & Healthcare. For more information, please visit [clarivate.com](https://clarivate.com).

### What data and insights are you missing?

Explore the way Clarivate  
Real-World Data product  
fuels research breakthroughs:  
[Real-World Data product](#).

[clarivate.com](https://clarivate.com)