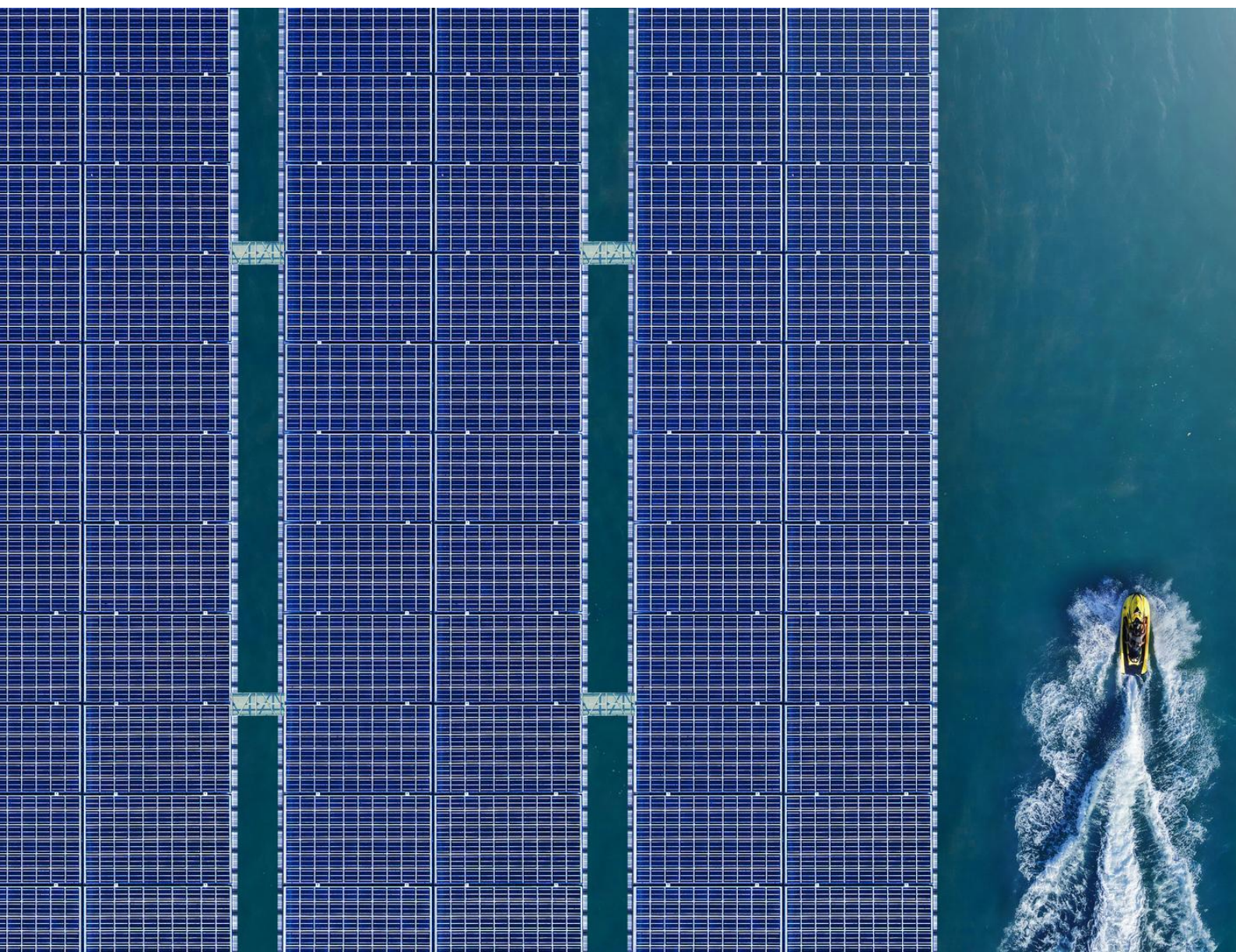


Derwent World Patents Index®

MCR 2026 Proposed CPI, GMPI and EPI Changes

September 2025



DWPI Manual Code Revision 2026 - CPI Codes					
New / Changed / Retired	Code	Date Range	Title	Scope Notes	Search Terms
SECTION A					
New	A04-A08	(2026-)	Monomers containing phosphorus group		
Scope Notes only	A05-J02	(-)	Heterocyclic polymers produced by cyclisation during polycondensation	Including: e.g. polyhydantoins, polyparabanic acid, polybenzimidazoles, polyisocyanurates, polycyanurates, polyoxazoli(di)nes, polydopamine, polyuretidione, polybenzoxazoles. Excluding polyimides, for which code from A05-J01+.	
Scope Notes only	A05-J09	(1977-)	Amine-epihalohydrin polymers; polycarbodiimides, polyhydrazides	Including Polybrene, Polyionene. Prior to 1977 see A05-J.	
Scope Notes only	A12-L02	(-)	Other photographic materials, processes	Inc:Holography	
New	A12-T06	(2026-)	Drones and Unmanned Aerial Vehicles	Unmanned aircraft.	Drone
New	A12-W18	(2026-)	Robotics	Including drones, unmanned aerial vehicles (UAV), Artificial intelligence (AI), mechatronics, bio-medical engineering, military, nanobots, etc. To be applied in conjunction with other application codes.	
SECTION B					
Scope Notes only	B04-F12	(2005-)	Minicells and organelles	E.g. mitochondria and any subcellular particle, including exosomes and migrasomes.	
Scope Notes only	B04-F1200E	(2017-)	Minicells and organelles (genetically engineered)	E.g. mitochondria and any subcellular particle, including exosomes and migrasomes.	
Scope Notes only	B11-C08E2	(1986-)	Noting physiological responses in animals or plants, modelling diseases	e.g. increased activity, change of habit. Includes AI disease modelling. This code is applied only when the test is the main inventive feature.	
Scope Notes only	B11-C08F7A	(2019-)	DNA/RNA sequencing methods	Includes Next Generation Sequencing and other high-throughput processing methods.	
Scope Notes + Search Terms	B11-C08N1H	(2022-)	Restriction fragment length polymorphism (RFLP)	Includes Derived Cleaved Amplified Polymorphic Sequences PCR (dCAPS-PCR).	dCAPS-PCR
Scope Notes only	B14-H06A	(2016-)	Radiosensitizer	Includes metalloptosis.	
SECTION C					
Scope Notes only	C04-F12	(2005-)	Minicells and organelles	E.g. mitochondria and any subcellular particle, including exosomes and migrasomes.	
Scope Notes only	C04-F1200E	(2005-)	Minicells and organelles (genetically engineered)	E.g. mitochondria and any subcellular particle, including exosomes and migrasomes.	

SECTION C (continued)					
Scope Notes only	C11-C08E2	(1986-)	Noting physiological responses in animals or plants, modelling diseases	e.g. increased activity, change of habit. Includes AI disease modelling. This code is applied only when the test is the main inventive feature.	
Scope Notes only	C11-C08F7A	(2019-)	DNA/RNA sequencing methods	Includes Next Generation Sequencing and other high-throughput processing methods.	
Scope Notes + Search Terms	C11-C08N1H	(2022-)	Restriction fragment length polymorphism (RFLP)	Includes Derived Cleaved Amplified Polymorphic Sequences PCR (dCAPS-PCR).	dCAPS-PCR
Scope Notes only	C14-H06A	(2016-)	Radiosensitizer	Includes metalloptosis.	
SECTION D					
New	D08-B16	(2026-)	Environmentally friendly cosmetic composition		Environment friendly
New	D11-D01K	(2026-)	Leather and suede cleaning	Does not include dehairing, defatting or dyeing of leather, which are coded in D07.	
SECTION E					
New	E05-U06A	(2026-)	Nanoparticles, nanopowders	Includes heteroatom-containing carbon nanoparticles or nanopowders.	
New	E05-U06B	(2026-)	Nanoroads, nanowhiskers or nanofibers	Includes heteroatom-containing carbon nanorods, nanowhiskers or nanofibers.	
New	E05-U06C	(2026-)	Nanofilms	Includes heteroatom-containing carbon nanofilms.	
New	E05-U06D	(2026-)	Other nanoforms (e.g. nanobuds, nanohorns or nanodiamonds)	Includes heteroatom-containing other nanoforms e.g. nanobuds, nanohorns or nanodiamonds.	
New	E05-U06E	(2026-)	Quantum dots	Includes heteroatom-containing nanocarbon quantum dots.	
New	E11-A02A	(2026-)	Carbocyclic ring opening		
New	E11-A02B	(2026-)	Heterocyclic ring opening		
Scope Notes only	E12-A12	(2012-)	Whisker, fiber or wire	Includes needle.	
SECTION H					
New	H09-A02C	(2026-)	Testing and control in coke ovens	Includes testing , analysing, determining , measuring and control.	
SECTION L					
Scope Notes only	L02-K03	(2025-)	Industrial applications	Includes use of ceramics in these following fields: oil and gas, petroleum, seismic, nuclear, metallurgy, construction, vehicles and aerospace. Can also be used for ceramic material used as filter for molten metal.	
Scope Notes only	L03-G05F	(2002-)	Electroluminescent displays (EL) and devices		Electrode
Scope Notes only	L03-J	(1986-)	Other manufacture and treatment of electr(on)ic components and materials	Includes cleaning method and cleaning device.	

SECTION L (continued)					
Scope Notes only	L04-C26	(-)	Semiconductor processing - other treatment processes not specified above	Includes spacers, electron transport layer and electron transmission layer.	

DWPI Manual Code Revision 2026 - GMPI & EPI Codes						
New / Changed / Retired	Class	Code	Date Range	Title	Scope Notes	Search Terms
SECTION P						
Search Terms only	P12	P12-A02	(2015-)	Machines for harvesting; mowing	Includes digging machines, topping machines, mowers, lifters, and harvesters or mowers combined with threshing devices, or with apparatus performing additional operations while cutting, e.g. with haymakers or dispensing apparatus for e.g. fertilisers, herbicides etc. Also includes equipment for binding, packing or storing harvested produce.	Potato ploughs, grain crop lifters, combine harvester/mower, packers, knotters, needles, discharge arms, containers, sheaf counters, outside dividers, lawn mowers
Search Terms only	P34	P34-A02	(2015-)	Syringes and other devices for introduction and removal of media from body	Syringes, needles, irrigation devices, Inhalers, sprayers, atomizers and insufflators, subcutaneous, intra-vascular or intra-muscular devices, catheters and other drainage apparatus; applicators. Includes blood transfusion equipment. For oral administration devices and methods, see P33-A50.	Eye drop dispenser
New	P55	P55-U13	(2026-)	Medical		
SECTION Q						
Scope Notes only	Q11	Q11-B	(-)	Tyres	See X22-E02B for electrical aspects such as tyre pressure sensing (also see S02-F04C1A) or X22-X for other electrical tyre details such as heaters (also see X25-B codes).	
Scope Notes + Search Terms	Q14	Q14-A	(-)	Seats; Saddles	Includes headrest, armrest, height adjustment, etc.	Seat cover, cushion
Scope Notes only	Q17	Q17-X	(-)	Other vehicle construction; fittings, Propulsion arrangements not provided for	Includes mechanical aspects of agricultural implements and their control.	
Scope Notes only	Q21	Q21-M09	(-)	Other locomotive servicing/manufacturing equipment not provided	Includes track maintenance, repair, servicing tools and equipment.	
Scope Notes only	Q22	Q22-C	(-)	Other hand propelled vehicles	Includes unpowered children's go-karts and agricultural hand propelled machines. Lawnmowers are only coded under P12-A02 (non-electrical) and X27-A01A (electrical details).	
Search Terms only	Q25	Q25-A05	(-)	Undercarriages; alighting gear		Landing gear
Scope Notes only	Q25	Q25-S03	(-)	Instrumentation	Includes mechanical aspects. See S02 for instrumentation in general and W06-B03J for electrical aspects of spacecraft instrumentation.	

SECTION Q (continued)						
Scope Notes + Search Terms	Q51	Q51-E05	(-)	Valve drive arrangements; Valve adjustment/control; Cam control	Includes mechanical valve clearance adjusters for motor vehicle engines, see also Q64-A for timing belt.	<i>Hydraulic lash adjusters, timing belt</i>
SECTION S						
Scope Notes only	S02	S02-F02	(-)	Measuring torque, work, mechanical power or efficiency	Includes moment and torque sensors.	<i>Motor, engine, brake, dynamometer, generator</i>
Search Terms only	S05	S05-G02A	(1992-)	For moving patients (includes wheelchairs)	Electric wheelchairs may also be coded as electric vehicles in X21, depending on claimed content.	<i>Stretcher, trolley, patient shifter</i>
SECTION T						
Title Only	T01	T01-H07A1	(1992-)	Type of bus structures	Includes common/parallel, plural and variable width/speed buses.	
Search Terms only	T01	T01-J16C3	(1992-)	Natural and pictorial language processing	Includes where presentation of data to the user includes non-verbal representations or symbol, or statements in standard English language syntax. Non intelligent language translation is covered by T01-J14.	<i>Semantics, abstracting concepts, phrases, natural language generation, named entity recognition, text structure, hallucination</i>
Search Terms only	T01	T01-J16C3C	(2025-)	Large language models (LLM)	This code covers model processing tasks based on large data sets. The model works on the principle of processing large-scale text data or data sets. Includes learning models of statistical/mathematical/ functional relationships from large data/ text sets. This code can be applied in conjunction with other T01-J16 codes based on the type/application mentioned.	<i>Large set of datasets, generation of text, ontology, texts analytics, hallucination</i>
Search Terms only	T01	T01-J16E	(2025-)	AI human-computer interface	This code covers user interaction by designing interactive models/ interfaces. It includes personal devices, computing devices, and covers all cognitive interactions (sight, touch, hearing, voice, spatial). See T01-J12 for program management, GUI/WIMPS/HCI, T01-J21 section for GPS/ non vehicle navigation details, and T01-J20B1 for software development kit/ application program interface (robotic process automation).	<i>Chatbot, intelligent bot, speech bot, ChatGPT, AI Agent, hallucination, etc.</i>
Scope Notes only	T01	T01-L01A	(2005-)	Primary power supply	Note that for portable devices the battery is the primary power source and would be coded here (as well as T01-M06A1). Also see X16-B codes for rechargeable batteries per se.	

SECTION T (continued)						
Scope Notes only	T01	T01-L01B	(2005-)	Back-up power supply	Also see U24-J01 for battery back-up and U24-K for power saving operation modes.	<i>UPS, battery back up</i>
Scope Notes + Search Terms	T04	T04-F02A5	(1992-)	Manual input pad and stylus	Includes details of digitiser tablet, graphic interface, touch pad, and recording pen.	<i>Pen, matrix, pen recorder, dictation pen</i>
Scope Notes + Search Terms	T07	T07-G01	(1997-)	Informing driver of traffic congestion	Includes use of roadside display to inform driver of delays or transmission of information directly to onboard vehicle display (see also X22-E11). For systems also displaying alternative route to driver to avoid congestion, also see T07-A05C and X22-E06F codes. Includes communication of traffic data between traffic infrastructure, roadside devices and vehicle. See X22-K08 for traffic centre to vehicle communications and X22-K02 for providing traffic information to vehicle via the cloud.	<i>Accident, road works, lane closure, traffic jam, diversion, signal failure, alternative route, V2I, C-V2I</i>
SECTION U						
Scope Notes + Search Terms	U12	U12-A01A1X	(1997-)	LED with other type of semiconductor	From 2006 see U12-A01A1E for polymeric and organic LEDs. See also U12-B03C for general organic device aspects. Includes layer of quantum, quantum dots, Electro-emissive or electroluminescent quantum dot displays.	<i>Lead sulphide, QLED, QDLED, EL-QLED</i>
Search Terms only	U12	U12-A01A3	(1997-)	Monolithic or hybrid circuit LED arrays		<i>Display, optical printhead, Mini LED, Micro LED</i>
Scope Notes + Search Terms	U12	U12-A01A5	(1997-)	Drive circuitry for LED	See also under application. Includes pixel circuits or structures.	<i>Switch, control, modulator, pixel</i>
Scope Notes only	U12	U12-A02A2F	(1997-)	Solar cell with amorphous, polycrystalline semiconductor	Includes thin film, perovskite thin film materials.	<i>Hydrogenated a-Si.</i>
Scope Notes + Search Terms	U12	U12-A02A2Q	(1997-)	Solar cell structure	For tandem solar cells see U12-A02A4C. Includes tunnel oxide passivated contact cells, passivated emitter and rear contact cells.	<i>Back surface field, textured cell, V-groove multi-junction, TOPCon cell, PERC cell</i>
Scope notes only	U12	U12-A02A5	(1983-)	Assemblies of solar cells	Includes microlithography for forming interconnections and monolithic integration. Also includes frame assembly, installation of solar panels, supporting of solar power generation module.	<i>Solar battery</i>

SECTION V						
Scope note	V06	V06-U03	(2010-)	Vehicles	Includes land, sea and air vehicles.	
SECTION W						
Scope Notes + Search Terms	W01	W01-C01D3D	(1992-)	Telephone identification	From 2009 the title of this code is changed (formerly 'Security, ID') to reflect its main focus on identification aspects within the telephone itself. It includes use of e.g. International Mobile Equipment Identity (IMEI) number, and also Subscriber Identity Module (SIM) cards and the like, in the case of mobile phones for which W01-C01D3C is normally also assigned. (T04-K codes are also assigned for smart card aspects). Use of two or more cards is covered from 2010 by W01-C01D3K, which takes precedence over this code. Arrangements to transmit ID data for security and billing purposes which involve some novelty in the phone itself are included here, but novel telephone system aspects of checking ID and entitlement to access e.g. a mobile telephone network are covered by W01- C02B6A (with W01-B05A1A) and are not assigned W01-C01D3D. Subscriber registration (by the telephone network) is covered by W01-B05A1N. General aspects of telephone security such as preventing access, theft alarms and dialling restriction are not included here, being covered by W01-C01Q8 and W01-C01B5 codes respectively. Also includes software aspects of SIM card.	ID, IMEI, IMSI, MEID, PIN, SIM, USIM, USIMID, ESIM
Search Terms only	W02	W02-B08B1	(1992-)	Lightning protection	See X13-C03 for lightning arresters.	
Search Terms only	W02	W02-K07E	(1997-)	Orthogonal multiplexing	Search with W02-C03B1 codes, especially W02-C03B1D, for satellite communication aspects of orthogonal multiplexing.	OTFM , Orthogonal Time-Frequency Multiplexing, OTFS, Orthogonal Time Frequency Space
Search Terms only	W05	W05-C02C3	(2009-)	Alarm prediction	This code covers arrangements for predicting an alarm condition based on e.g. trend in change of measured values from sensors, etc.	Alarm condition, threshold value, time length
SECTION X						
Search Terms only	X12	X12-D07F	(2007-)	Cable testing	Includes testing of insulated conductors. Testing of non-insulated conductors is covered by X12-D07E codes. See also for electrical tests on wires and cables. For non-electrical tests, see S02 and S03 classes.	Simulation
Search Terms only	X13	X13-C03	(-)	Limiting excess current or voltage	See X12-A and X12-F codes also.	Surges, transients, lightning arresters

SECTION X (continued)						
New	X15	X15-A11	(2026-)	Off-shore/floating systems		<i>Floatovoltaic, floating solar farm</i>
New	X15	X15-C99	(2026-)	Other ocean/water based power generation	Includes buoyancy energy storage and deep ocean gravitational energy storage to provide e.g. storage of offshore wind power for later use or for compression of hydrogen. Also includes underwater pumped storage systems.	<i>BEST, BBES, buoyancy battery energy storage, underwater pumped hydro storage, Ocean battery</i>
New	X16	X16-B02	(2026-)	Additives; performance-enhancers	Includes use of additive materials such as graphene, e.g. incorporated into electrodes of Li-ion or solid state batteries (see also X16-B01F1 and X16-B01S respectively) to improve battery performance. Also see E05-U05 for nanomaterials such as graphene. Can be used with other X16-B codes as appropriate.	<i>Graphene battery</i>
Scope Notes + Search Terms	X16	X16-E01H1	(2005-)	Nanomaterials	To be used together with X16-E01A/E01C codes. See also E05-U05 codes for nanomaterials such as graphene.	<i>Graphene</i>
Scope Notes only	X21	X21-A01H	(2002-)	Electric bus/lorry	Includes trolley buses, trucks and other commercial vehicles. See X23 only for trams.	
New	X21	X21-A01N	(2026-)	Agricultural electric vehicle	Includes electric agricultural tractors, combine harvesters, etc. See also X25-N codes.	<i>Agriculture, farm</i>
New	X21	X21-A01P	(2026-)	Construction electric vehicle	Includes loader, bulldozer, crane, mine truck etc. Also see X25-D codes for soil-shifting and mining per se.	<i>Mining</i>
Search Terms only	X21	X21-A05E	(2013-)	Monitoring; Instrumentation	Includes general instrumentation, e.g. for vehicle dashboard. Use in conjunction with X21-A06 codes to indicate the variable being monitored such as X21-A06D for monitoring remaining battery capacity.	<i>SOC, State of charge</i>
Search Terms only	X21	X21-A06D	(2021-)	Current and voltage sensors	Includes measurement of electrical parameters such as remaining battery capacity (see also X21-A05E for battery SOS and battery condition alerts). See also X16-H codes and S01-G06A.	<i>SOC, State of charge</i>
Search Terms only	X21	X21-B01A	(1997-)	Traction battery; Fuel cell	Includes novel battery, fuel cell details and their grouping to attain higher operating voltage. See also X16 codes for a more detailed breakdown of batteries and fuel cells (X16-C), per se.	<i>Hydrogen fuel arrangements</i>

SECTION X (continued)						
Scope Notes only	X22	X22-X	(-)	Other vehicle aspects	Includes static electricity (see also X25-S) and cathodic protection (see also X25-R06), driving instruction simulators (see also W04-W07A) etc. Also includes electrical aspects of vehicle tires such as heaters (also see X25-B codes). See X22-E02B instead for tyre pressure sensing/warning.	
Scope Notes only	X23	X23-A05	(-)	Measuring; Testing	Includes brake monitoring sensors, track straightness determination, other train sensors etc.	
Search Terms only	X26	X26-H	(1992-)	Light emitting diodes (LEDs)	Includes all LEDs only when used for illumination. OLEDs or organic LED-based lighting is covered by X26-J only.	<i>LED candle</i>
Scope Notes only	X26	X26-M	(2002-)	Decorative or special-effects lighting	Includes lighting for Christmas decorations, decorative light strings, LED candles, etc. See also W04-X03C for novelties and ornamental lights, X26-H codes for details of LED lights, and X26-X for light strings.	

About Clarivate

Clarivate™ is a leading global provider of transformative intelligence. We offer enriched data, insights & analytics, workflow solutions and expert services in the areas of Academia & Government, Intellectual Property and Life Sciences & Healthcare. For more information, please visit clarivate.com.

clarivate.com

© 2025 Clarivate. Clarivate and its logo, as well as all other trademarks used herein are trademarks of their respective owners and used under license.