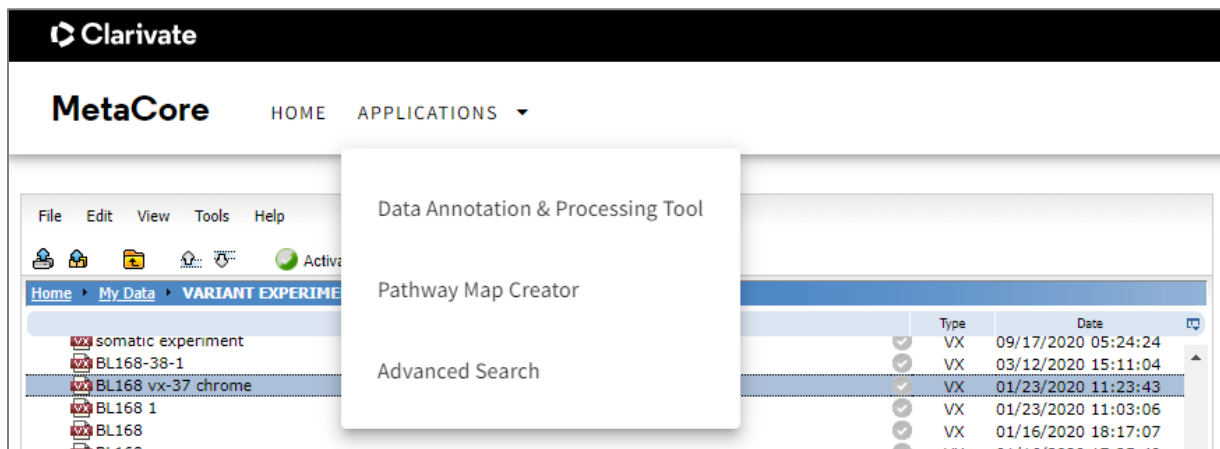


How to download and install the JAVA plugin for MetaCore Applications

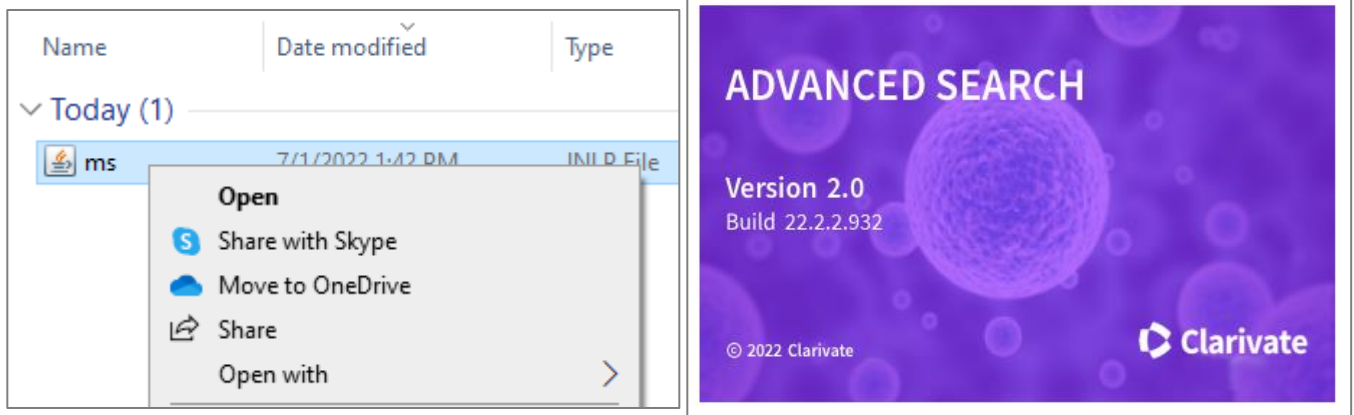
MetaCore

This plugin allows you to run the *Advanced Search*, *Data Annotation and Processing Tool*, and the *Pathway Map Creator* applications



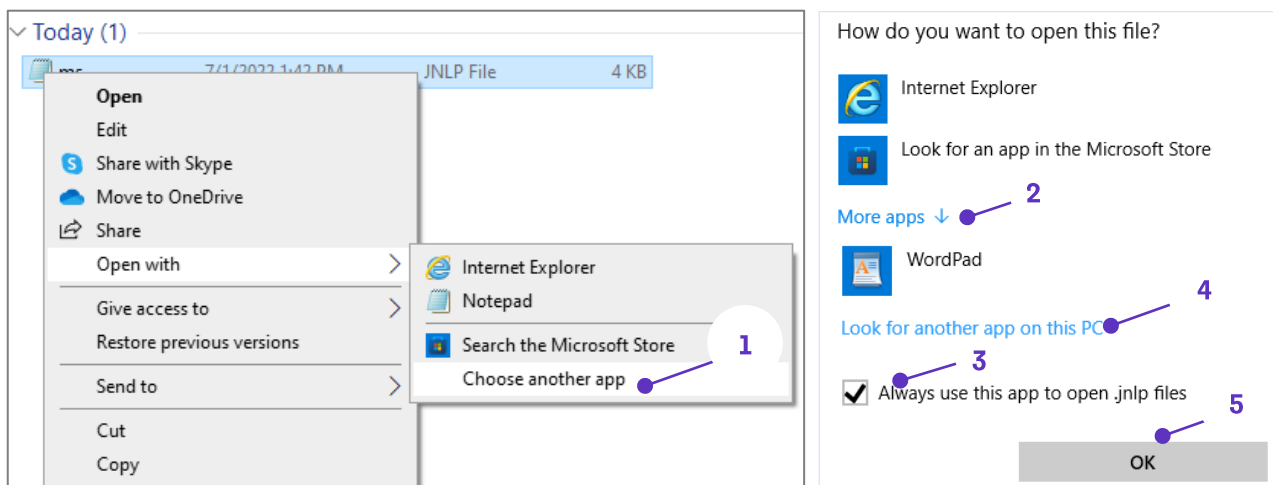
1. First you will need to download and install JAVA version 8 from the java.com website
2. Once JAVA is installed, from the MetaCore header, click on the name of the application you want to launch. This will download a JAVA JNLP file

3. In your downloads folder, right-click on the downloaded ms.jnlp file and select “Open”. This should launch the selected app. Note, it may take a minute or two to launch

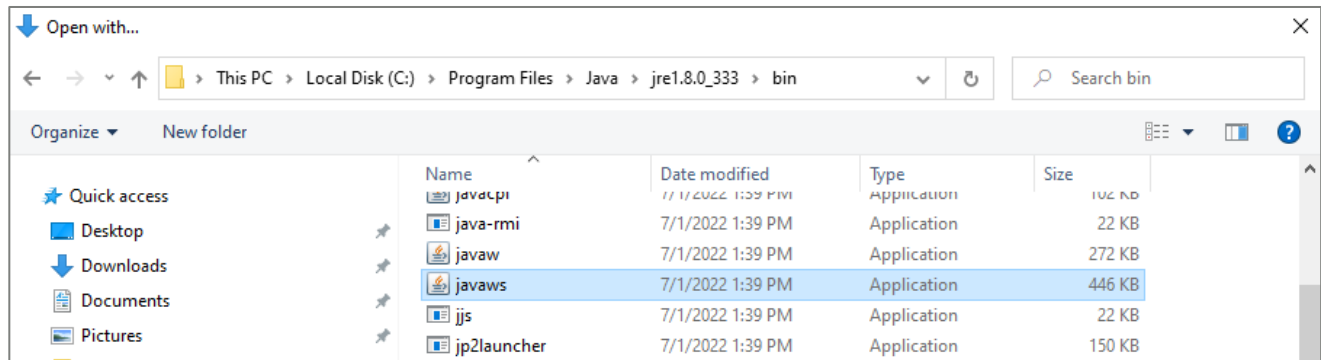


However, if it does not open as expected, you will need to specify which app to open the ms.jnlp file as follows:

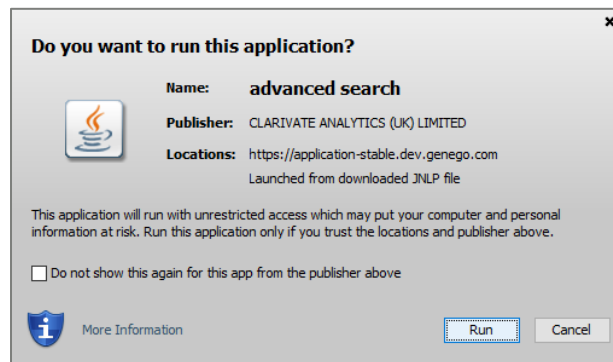
1. > Open with > Choose another app, and follow the path shown to *look for another app on this PC*.



- Browse to the javas application as shown below, select it, and click “Open”



- Wait a few moments (it may take a minute or two) and a dialog box will open automatically asking if you want to run this application.



- Select “Run”
- Wait another short while and the applet will open

You should only need to complete the installation once. After that, the app will automatically open each time you select it from the MetaCore Applications menu.

For more information contact Customer Service at **LS Product Support**