

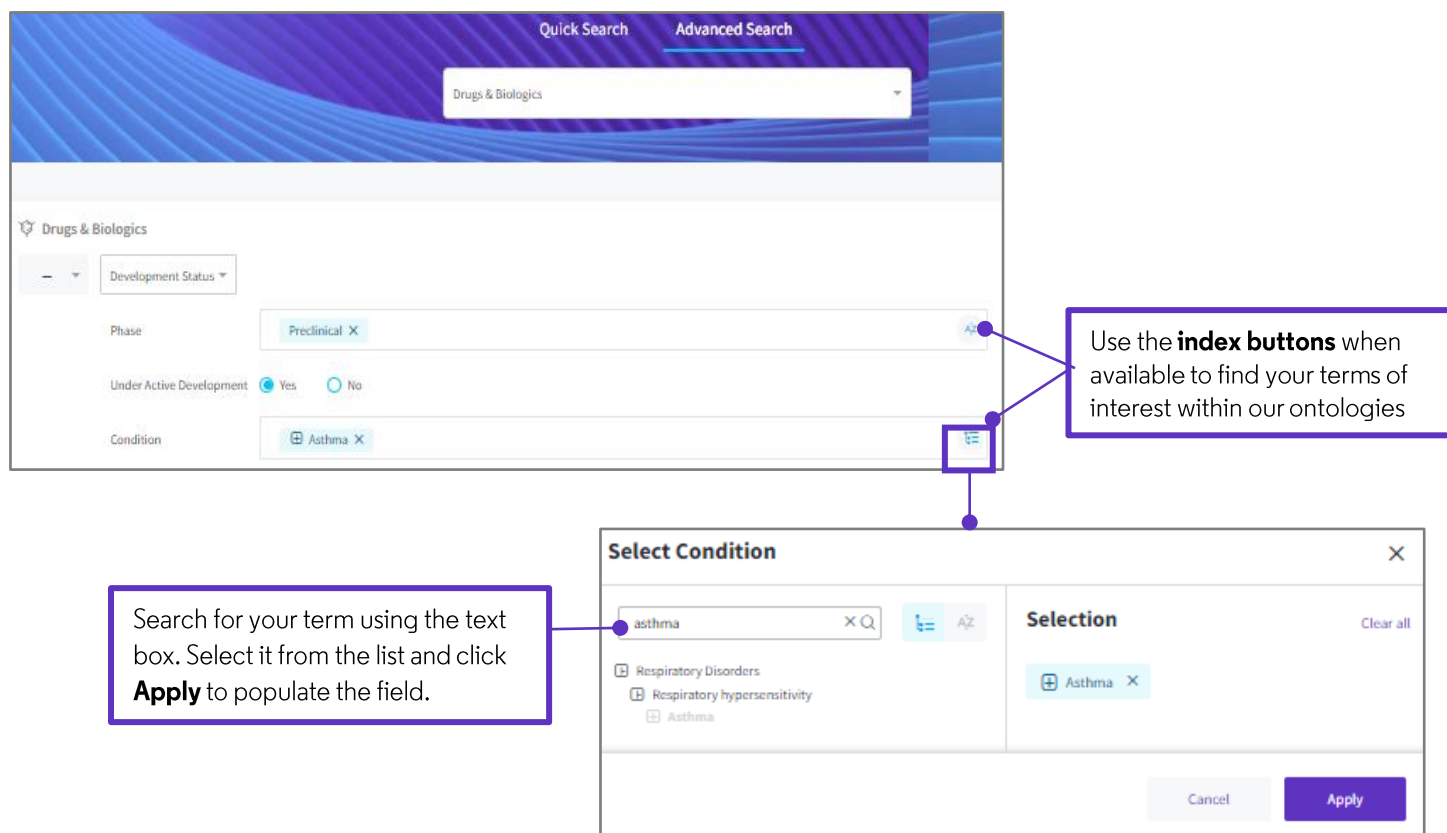
Understand and monitor your space of interest

Cortellis Drug Discovery Intelligence

See how to explore research and development activity in your area and stay up to date with the latest developments using alerts.

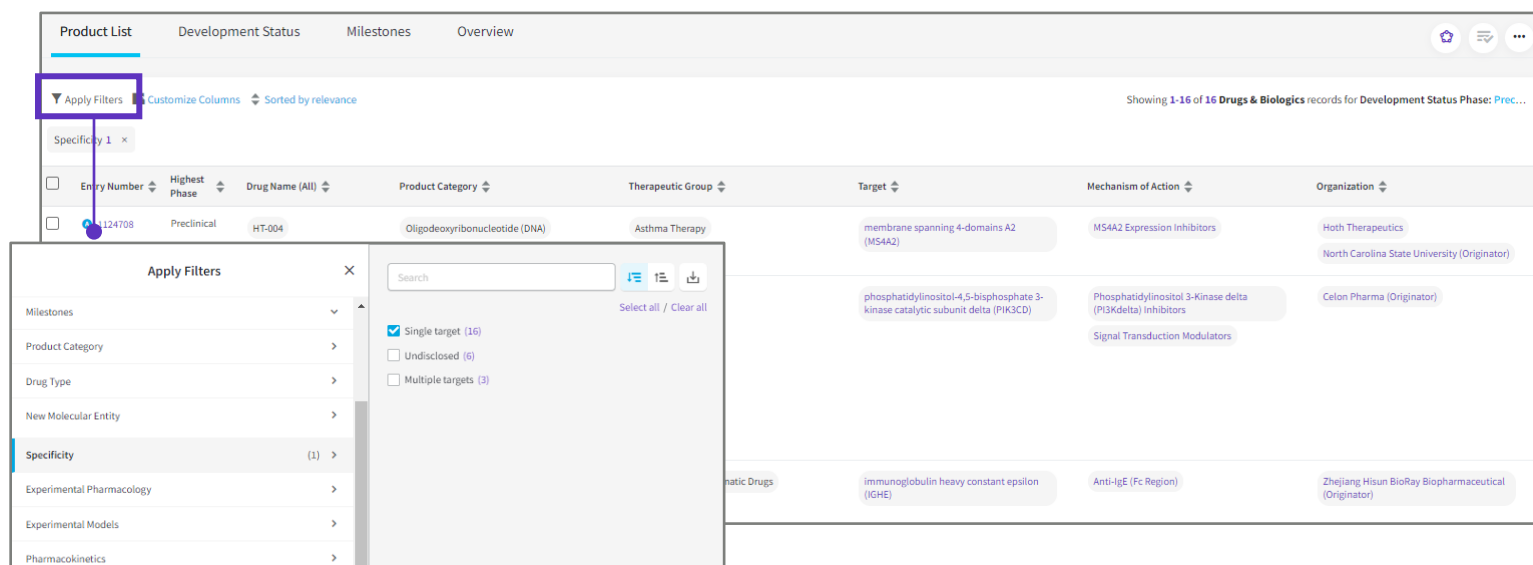
Scenario: you would like to find drug development programs for drugs in preclinical development for asthma, understand which organizations are involved, and keep an eye on further development activity in that area.

1. Use **Advanced Search** to define your space. In the example below, we are looking for **Drugs & Biologics** in **Preclinical** development for **Asthma**.



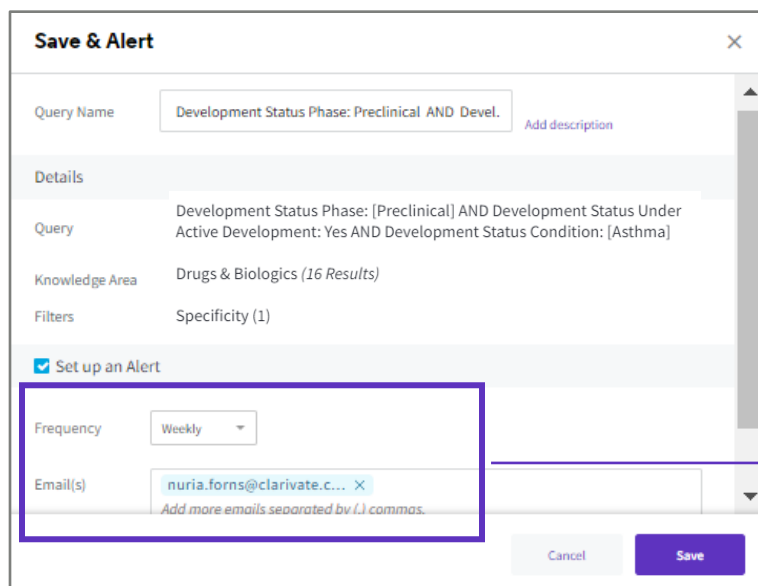
The screenshot displays the Clarivate Advanced Search interface. At the top, there are tabs for 'Quick Search' and 'Advanced Search'. Below the tabs, a dropdown menu is set to 'Drugs & Biologics'. The main search area contains several filters: 'Development Status' (set to 'Preclinical'), 'Under Active Development' (set to 'Yes'), and 'Condition' (set to 'Asthma'). A callout box points to the 'index' buttons (represented by a list icon) next to the 'Preclinical' and 'Asthma' filters, stating: 'Use the **index buttons** when available to find your terms of interest within our ontologies'. Another callout box points to the 'Select Condition' dialog box, which is open. This dialog box has a search bar with 'asthma' entered, a list of results including 'Respiratory Disorders', 'Respiratory hypersensitivity', and 'Asthma', and a 'Selection' panel on the right showing 'Asthma' selected. A callout box points to the search bar in the dialog box, stating: 'Search for your term using the text box. Select it from the list and click **Apply** to populate the field.' The dialog box also has 'Cancel' and 'Apply' buttons at the bottom right.

- Your results are represented in 4 different tabs. **Product List** offers a table with the list of drugs and associated information. Use **Apply Filters** to further refine your results, for instance, by target specificity:

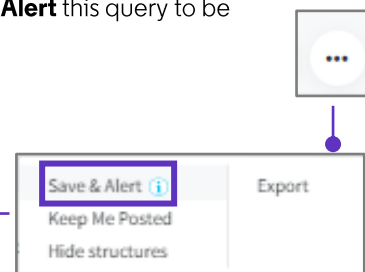


The screenshot shows the 'Product List' tab in the Clarivate interface. A purple box highlights the 'Apply Filters' button. Below it, a dropdown menu shows 'Specificity 1'. The main table displays drug information with columns: Entry Number, Highest Phase, Drug Name (All), Product Category, Therapeutic Group, Target, Mechanism of Action, and Organization. The first row shows a drug with Entry Number 1124708, Preclinical phase, HT-004 drug name, Oligodeoxynucleotide (DNA) product category, Asthma Therapy therapeutic group, and targets including membrane spanning 4-domains A2 (MS4A2) and phosphatidylinositol-4,5-bisphosphate 3-kinase catalytic subunit delta (PIK3CD).

- Under the **Options (...)** menu on the top right of the page you can **Save and Alert** this query to be notified when new drugs reach preclinical stages for asthma.



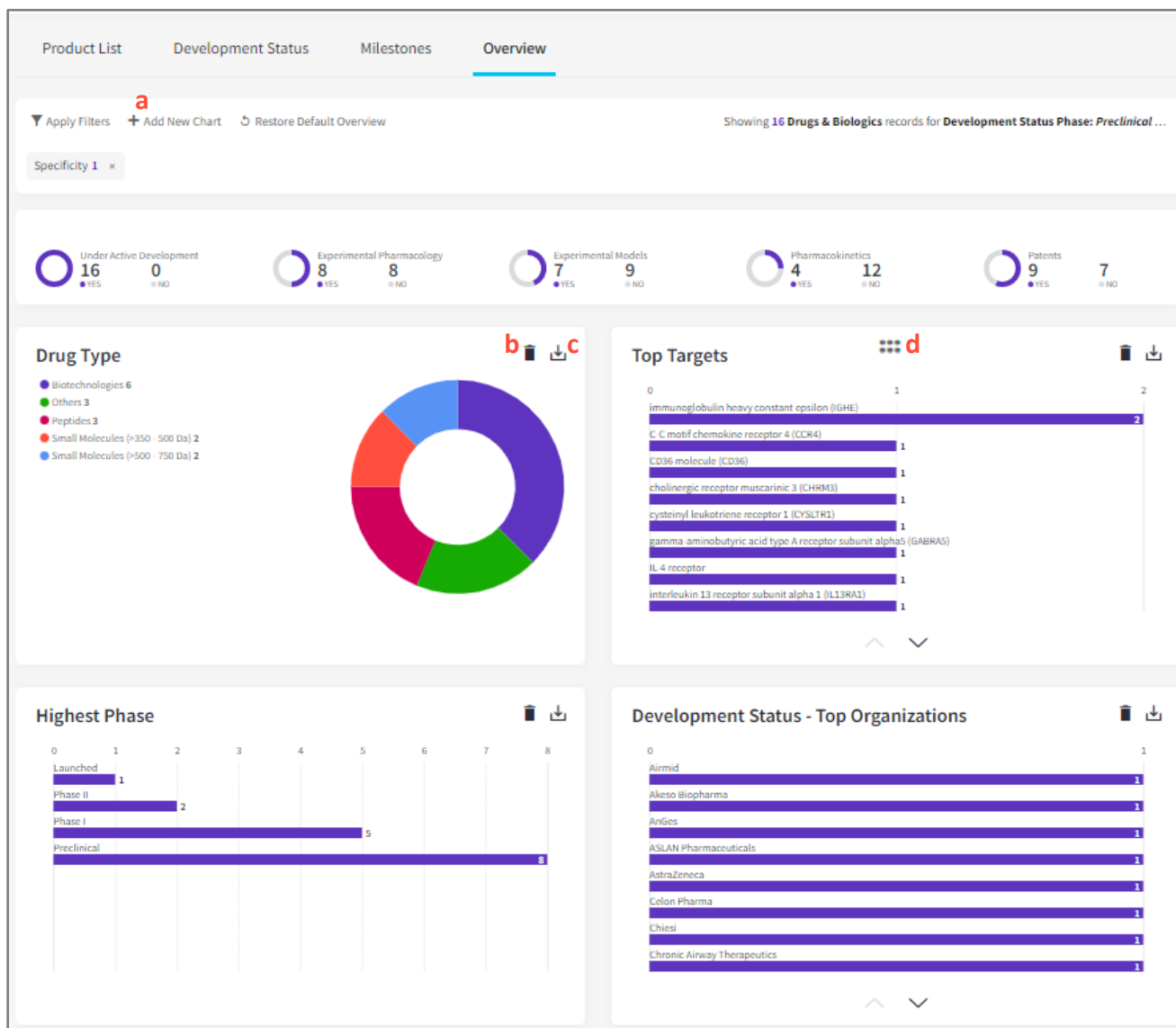
The 'Save & Alert' dialog box is shown. It includes fields for 'Query Name' (Development Status Phase: Preclinical AND Devel.), 'Query' (Development Status Phase: [Preclinical] AND Development Status Under Active Development: Yes AND Development Status Condition: [Asthma]), 'Knowledge Area' (Drugs & Biologics (16 Results)), and 'Filters' (Specificity (1)). The 'Set up an Alert' section is checked, and the 'Frequency' is set to 'Weekly'. The 'Email(s)' field contains 'nuria.forns@clarivate.c...'. The 'Save' button is highlighted.



The 'Options (...)' menu is shown. It includes options: 'Save & Alert', 'Keep Me Posted', 'Hide structures', and 'Export'. The 'Save & Alert' option is highlighted with a purple box.

Select the **Frequency** of your alert and share it with your colleagues

4. Visualize trends for your results under the **Overview tab**, such as what are the top organizations associated to your results.



- a) Visualize other categories in your Overview dashboard
- b) Remove irrelevant visualizations
- c) Download graphs for your presentations and papers
- d) Move graphs to the preferred position

For more information contact Customer Service at **LS Product Support**.